

# **S/M FLECKVIEH CATTLE**

## **Private Treaty Bull Sale**

### **w/ March 3 Telephone Bid-off**

**Jeff Sorenson**

48186 257th Street  
Garretson, South Dakota 57030

[sorenson@augie.edu](mailto:sorenson@augie.edu)

**605-359-8728 (cell)**

[www.smfleckvieh.com](http://www.smfleckvieh.com)



**KUNTZ KINGPIN 2H**

# S/M FLECKVIEH CATTLE

## 2025 Sale Bulls

Welcome to the 2025 lineup of sale bulls at S/M Fleckvieh Cattle. These bulls are the product of **our 50th year** breeding Fleckvieh Simmental cattle, beginning in 1975. They represent our focus on a balance of the economic traits important for beef production — and this year for the first time ALL are POLLED.

The bulls sell by private treaty. They are pre-priced (see pg. 3). Let us know please if you want a bull, and if you are the only person asking for that bull by **noon CST on Monday, March 3**, he is yours at that price. If more than one person asks for a bull, we will contact you to arrange a **telephone bid-off after 6 pm the evening of March 3** — only among those who have asked for that bull.



### *Expected Progeny Differences (EPDs)*

We breed for a balance of the most important economic traits, utilizing the science of EPDs and genomics, with a common sense eye to soundness and productive beef type. Our herd is 100% DNA tested, we report and receive data through THE, and we believe our genetics are better for what we learn from it. And the many years, and generations of breeding to lock in balanced genetics, have resulted in these powerful and dependable performance bulls.



Sample EPD chart  
S/M Marathon M223

CE	WW	YW	MCE	MWW	API	TI
12	84	118	6	79	113	73
10	15	15	20	10	15	10

On this sample chart, the top numbers are the raw EPDs for each trait as calculated by the American Simmental Association. The bottom numbers are the animal's percentile ranking. For example, this bull is in the top 10% for Calving Ease, and the top 15% for Weaning, Yearling Weight and All Purpose Index among all fullblood cattle in the ASA database.

#### Explanation of the EPD Chart

CE = Calving Ease Index  
 WW = added pounds Weaning Weight  
 YW = added pounds Yearling Weight  
 MCE = Maternal Calving Ease Index  
 MWW = added pounds Maternal Weaning Weight  
 API = All Purpose Index  
 TI = Terminal Index

The bottom number on the chart (with each bull) reflects the rank of that EPD, eg. an EPD ranking 10 is in the top 10% of Fullblood Simmental bulls.

## ***Fullblood Fleckvieh Cattle***

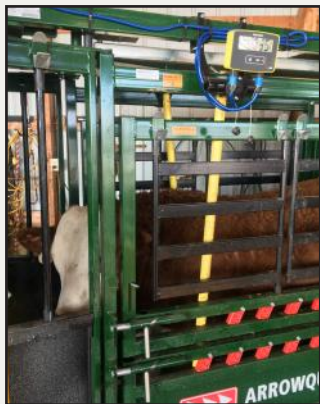
We breed Fullblood Fleckvieh Simmental cattle, whose genetics trace only to the original Fleckvieh cattle of Germany and Austria where these beef-type Fleckvieh Simmental cattle originated. Fullblood, because those genetics maximize hybrid vigor when crossed with other breeds of cattle.

The Fleckvieh female's moderate frame, natural easy fleshing and big volume capacity help her stay in good condition and rebreed on schedule year after year, on grass and poorer roughages.

After five decades of breeding and improving these cattle, this year's sale bulls all are polled, three homozygous, and all tested non-diluters.

## ***Our Breeding Goals***

We focus on economic traits that add value:



- Type – big-volume, deep-fleshed cattle that are soggy, long and thick.
- Calving ease, both direct and maternal — in a range that works under commercial conditions.
- Females – tight udders with small teats, feminine, sound feet and legs, with the depth and barrel to thrive on grass and corn-stalks.
- Disposition – docile and easy to handle.
- Polled – as one of several important economic traits.
- Color – non-diluted dark red with lots of protective pigment.

Our Fullblood Fleckvieh Simmentals are run like commercial cattle, so we know how they work in the real world. We select for performance, disposition and soundness, and grow out only the best as sale bulls. They are developed slowly on a high-roughage diet of free-choice grass hay, a half oats/ corn grain mix, and access to a Flaxlic mineral tub that boosts semen quality. They grow well but stay in their working clothes, so that they're sound, fertile, ready to go to work — and will stand up for years of service for you.

---

Please check out our website at:  
**[www.smfleckvieh.com](http://www.smfleckvieh.com)**. Text, email or call. I'd love to talk about Fleckvieh cattle.

*Jeff Sorenson*

**605-359-8728   [sorenson@augie.edu](mailto:sorenson@augie.edu)**



# S/M FLECKVIEH CATTLE

## 2025 Private Treaty Bull Sale Prices

Thank you for taking a look at our 2025 Sale Bulls. They are available for sale by private treaty, at a pre-set price, **with a bid-off on March 3 CST** for any bulls that are asked for by noon on that date by more than one person. A check for half down will hold your bull until April, when we semen check and give a breeding soundness exam, give spring breeding shots and can deliver up to 250 miles to you.

### Prices of the 2025 bulls:

S/M Milestone M102	\$12,000
S/M Minuteman M221	\$ 6,000
S/M Marshall M282	\$ 5,000
S/M Missleman M521	\$ 4,000
S/M Montana M592	\$ 4,000
S/M Million M171	\$ 8,000
S/M Milley M121	\$ 5,000
S/M Marathon M223	\$ 6,000
S/M Madison M081	\$ 6,000
S/M Marksman M771	\$ 4,000
S/M Metric M452	\$ 4,000
S/M Major M421	\$ 4,000

*Jeff Sorenson*

**605-359-8728      [sorenson@augie.edu](mailto:sorenson@augie.edu)**

**website: [www.smfleckvieh.com](http://www.smfleckvieh.com)**



## **S/M MILESTONE M102**

**4361014**

**3/17/2024 BW 96 AWW 775/ 105 AYW 1439/ 109 Homozygous Polled**

**Anchor D Raptor 392C**

**Kuntz Kingpin 2H**

**Kuntz Miss Moses 308A**

**PHS Bank Roll 345B**

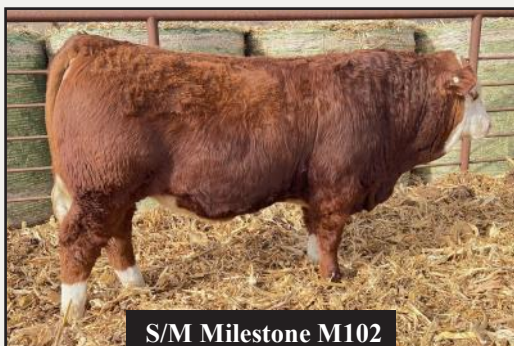
**S/M Franchesca H102**

**S/M Franchesca F182**

We lead off our 2025 bulls with this Milestone of our 50th year breeding Fleckvieh Simmental cattle. Top-of-herd performance, dark mahogany red color, long as a train — deep-sided, style — and homozygous polled.

S/M Milestone H102 combines some of the best balanced EPDs to be found — both calving ease and powerful growth — bending the curve which is what we aim to do.

His dam S/M Franchesca H102 has had three calves to date, with an average weaning index of 107. She's feminine, milky, and she produces. If not so closely related to much of our herd, this guy would stay right here. Sells in his entirety.



**S/M Milestone M102  
(right side)**

**Tested Non-Diluter**

<b>CE</b>	<b>WW</b>	<b>YW</b>	<b>MCE</b>	<b>MWW</b>	<b>API</b>	<b>TI</b>
9	84	125	3	80	130	80
25	10	5	65	4	1	1



## **S/M MINUTEMAN M221**

**4361024**

**2/16/2024    BW 74    AWW 697/ 95    AYW 1470/ 111    Polled**

**Anchor D Raptor 392C**

**Kuntz Kingpin 2H**

**Kuntz Miss Moses 308A**

**Double Bar D Pol Manchester**

**S/M Jewel K221**

**S/M Juliette X201**

Were we surprised to receive results from data submitted to ASA that Minuteman was our number one bull this year for adjusted yearling weight! He arrived unassisted with a small birthweight out of a first-calf heifer — and then packed on the pounds growing into this moderate-framed, but very long bull, with pounds on pounds packed into his extreme thickness.

Calves like this are what give Kuntz Kingpin his amazing earned EPDs, and why we use Kingpin (who is also very much a power bull) safely on heifers.

Dark blood red, a classy look, quiet and friendly.

Want to make moderate, and thick, easy-keeping, productive daughters, and put loads of meat into your calves? This guy should do that.

**Tested Non-Diluter**

<b>CE</b>	<b>WW</b>	<b>YW</b>	<b>MCE</b>	<b>MWW</b>	<b>API</b>	<b>TI</b>
<b>11</b>	<b>72</b>	<b>102</b>	<b>5</b>	<b>74</b>	<b>117</b>	<b>73</b>
<b>10</b>	<b>50</b>	<b>45</b>	<b>30</b>	<b>20</b>	<b>10</b>	<b>10</b>



## S/M MARSHALL M282

4361004

3/10/2024 BW 103 AWW 699/ 95 AYW 1331/ 100 Polled

Anchor D Raptor 392C  
Kuntz Kingpin 2H  
Kuntz Miss Moses 308A  
Sibelle Arthur 39B  
S/M Suzanne F282  
Grinaltas Scarlet PFF14S

There's a pattern here — a set of super good polled bulls by Kuntz Kingpin, year after year from these consistent, productive mothers — this time a Sibelle Arthur daughter.

Pictured here is S/M Marshall M282's full brother from last year, S/M Lineman L282 — you can see the consistent big-bodied, meaty type.

S/M Marshall M282's dam is a heavy-middled, moderate female with a perfect tidy udder. This calf, for all his thickness, girth, big top and muscle, is also extra soggy, mellow, and loose-made throughout.



S/M Lineman L282  
(full brother)

Tested Non-Diluter

CE	WW	YW	MCE	MWW	API	TI
4	89	128	0	79	108	76
75	4	3	95	5	30	4



## **S/M MISSLEMAN M521**

**4361029**

**2/16/2024 BW 83 AWW 776/ 106 AYW 1406/ 106 Homozygous Polled**

**Anchor D Raptor 392C**

**Kuntz Kingpin 2H**

**Kuntz Miss Moses 308A**

**Double Bar D Pol Manchester**

**S/M Karalee K521**

**S/M Karoline F581**

The second of these Kingpin sons from Manchester daughters, it appears to be a match that clicks.

Born unassisted from a first-calf heifer, this bull has been extremely long from birth, with more frame, and now has grown into that length becoming the powerhouse we see today.

His dam S/M Karalee K521 is a young Manchester daughter, thick on thick (as they all are) with a tidy little udder that milks well, feminine for all her thickness, and homozygous polled.

Another top performing Kingpin son with great balanced EPDs for both calving ease and powerful growth. He's a lighter red color (non-diluter), bald-faced both sides, and long, long, long.

**Tested Non-Diluter**

<b>CE</b>	<b>WW</b>	<b>YW</b>	<b>MCE</b>	<b>MWW</b>	<b>API</b>	<b>TI</b>
<b>10</b>	<b>81</b>	<b>111</b>	<b>4</b>	<b>80</b>	<b>118</b>	<b>79</b>
<b>20</b>	<b>20</b>	<b>20</b>	<b>45</b>	<b>4</b>	<b>5</b>	<b>2</b>



## S/M MONTANA M592

4361038

3/30/2024 BW 102 AWW 807/ 110 AYW 1402/ 106 Polled

Anchor D Raptor 392C  
Kuntz Kingpin 2H  
Kuntz Miss Moses 308A  
PHS Bank Roll 345B  
S/M Kaitlyn G592  
S/M Kathleen A532

It makes the beef business fun when an attractive, feminine female like Kaitlyn G592, year after year brings home a thick, powerful beef bull like this calf.

We've included here a photo of what Montana looked like last fall at weaning — deep, solid, thick.

Tested Non-Diluter



S/M Kaitlyn G592



CE	WW	YW	MCE	MWW	API	TI
7	86	120	1	81	117	75
45	10	10	90	3	10	10



## S/M MILLION M171

4361034

3/03/2024

BW 94

AWW 884/ 121

AYW 1448/ 109

Polled

JNR Baldwin

JNR Barbarian

RUK Ms Capri 1C

PHS Bank Roll 345B

S/M Franchesca E171

S/M Franchesca W191

What an absolute chunk of a bull. An actual weaning weight at 7 1/2 months of 980 pounds — already looking like a



herdsire rather than a calf needing to be taken off his mother (who produced our top-selling bull last year, another soggy brute much like Million). She's given us six calves to date with an average weaning index of 108.

When Barry LaBatte offered us a semen pack on JNR Barbarian, we jumped at the chance to infuse the genetics of this massive, soft-made (but horned) sire into our program. Barbarian is passing his power and phenotype to his first progeny — and a few like Million are polled!

The only downside of building our cowherd on a limited number of cow families is the difficulty of using homegrown bulls like Million on them ... so he's available to you.

Tested Non-Diluter

CE	WW	YW	MCE	MWW	API	TI
4	94	127	2	86	103	79
80	1	4	80	1	45	2



**S/M MILLEY M121**

**4361020**

**3/06/2024    BW 98    AWW 774/ 106    AYW 1366/ 103    Polled/S**

**JNR Baldwin**

**JNR Barbarian**

**RUK Ms Capri 1C**

**Grinalta's HP Ultra FF94**

**S/M Franchesca Z121**

**S/M Franchesca S161**

When we bred our herd matron S/M Franchesca Z121 to Barbarian, we crossed our fingers and hoped for a polled heifer. Instead she gave us this polled/s powerhouse of a bull calf. And as you can see, the 13-year-old cow took care of him pretty well.

Like his sire, Milley is a freight train. He'll put length and pounds on his steers, and with the longevity and productivity of his dam, I'd plan to keep all his daughters.



**Tested Non-Diluter**

CE	WW	YW	MCE	MWW	API	TI
4	81	104	3	77	100	71
70	20	40	65	10	55	20



## **S/M MARATHON M223**

**4361032**

**2/15/2024    BW 79    AWW 815/ 111    AYW 1422/ 107    Polled**

**Black Gold Elevation 20E**

**IPU Pol Elevation 144K**

**FGAF Zegetta 096E**

**Kuntz Kingpin 2H**

**S/M Jules K223**

**S/M Juliette X201**

In S/M Marathon M223 we have the first progeny combining the genetics of our two current walking herdsires, IPU Pol Elevation 144K and Kuntz Kingpin 2H. And what fun to see in him that our walking bulls are doing just what we expected of them ... a very reasonable birthweight out of a first-calf heifer — and then growing into this big, long powerful future herdsire himself.

If you look at his EPD chart, this is what we mean when we say that we aim for balance. ALL of these important economic traits are in the top 20% of the breed. And if you need to be convinced of the value of attention to the numbers, look at the performance and quality of this calf!

As we celebrate our 50th year breeding Fleckvieh Simmental cattle, we gave the name “Marathon” to this calf, a result of the decades long, generation after generation journey we’ve been on to produce cattle of his genetic value.

**Tested Non-Diluter**

<b>CE</b>	<b>WW</b>	<b>YW</b>	<b>MCE</b>	<b>MWW</b>	<b>API</b>	<b>TI</b>
<b>12</b>	<b>84</b>	<b>118</b>	<b>6</b>	<b>79</b>	<b>113</b>	<b>73</b>
<b>10</b>	<b>15</b>	<b>15</b>	<b>20</b>	<b>10</b>	<b>15</b>	<b>10</b>



**S/M MADISON M081**  
3/21/2024 BW 80 AWW 734/ 100 AYW 1217/ 92 Homozygous Polled  
Black Gold Elevation 20E  
IPU Pol Elevation 144K  
FGAF Zegetta 096E  
PHS Bank Roll 345B  
S/M Rose Ann F081  
S/M Rachel D061

4361023

Heifer bull here — and homozygous polled. This bull’s dam S/M Rose Ann F081 has always given us smaller birth-weight calves, who then in turn go on to produce easy-calving, smaller birthweight calves as well.

Her first calf and a maternal brother to S/M Madison M081, was S/M Halfback H081, who is doing a great job for Dirk Johnson of Vertical Edge Genetics in Idaho, and seeing AI use as a trusted heifer bull.

Madison’s sire IPU Pol Elevation 144K has also emerged as a trusted calving ease sire, with his CE EPD rising with his first calf crop to the top 1% of the breed.

Madison is a moderate framed bull, thick in his type, attractive, friendly and gentle to work with.

Tested Non-Diluter



S/M Halfback H081

CE	WW	YW	MCE	MWW	API	TI
16	73	100	8	68	115	69
1	50	50	5	55	10	35



## S/M MARKSMAN M771

4361007

4/24/2024

BW 90

AWW 726/ 99

AYW 1280/ 97

Polled

Black Gold Elevation 20E

IPU Pol Elevation 144K

FGAF Zegetta 096E

Sibelle Dirty Harry 25Z

S/M Helga E771

Ole Sefi 480X

The youngest of our bulls this year, S/M Marksman M771 is developing into one of the most attractive calves — dark red, blaze-faced, lots of muscle, lots of hair, super soggy. He



inherited his polled head and dark red color from his sire, and the thick, soft type of his moderate, wide-based Dirty Harry dam — one of only two horned cows remaining in our herd, still here because she's so perfectly on-type.

Given his CE EPDs, I'd expect this bull to calve fairly easily.

He too is friendly and gentle to work with.

Tested Non-Diluter

CE	WW	YW	MCE	MWW	API	TI
14	68	84	7	63	110	67
2	70	90	10	85	20	50



## S/M METRIC M452

4361027

3/20/2024

BW 88

AWW 707/ 97

AYW 1398/ 106

Polled

Black Gold Elevation 20E

IPU Pol Elevation 144K

FGAF Zegetta 096E

Anchor T Legend 7H

S/M Callista C452

S/M Carissa Y413

Another bull I'd consider testing on heifers, given his pedigree full of calving ease sires (Legend is legendary for calving ease and his milky daughters), his EPDs and his more refined, smooth type.



S/M Callista C452

This bull's dam S/M Callista C452 has given us four polled daughters and two granddaughters so far — all as attractive and useful as she is.

I'd use this bull for calving ease, and on your best cows to create a set of functional, attractive females.

Tested Non-Diluter

CE	WW	YW	MCE	MWW	API	TI
12	71	97	8	67	104	64
10	60	60	4	60	40	70



## **S/M MAJOR M421**

**4361043**

**2/04/2024   BW 60   AWW 639/ twin   AYW 1162/ twin   Polled/S**

**ABR Sir Arnold's Image**

**Sanmar Polled Pharaoh 12P**

**Sanmar Pol Teardrop 12M**

**FGAF Granger 060G**

**S/M Cora Lee K421**

**S/M Corinne H402**

A Sanmar Polled Pharaoh son that I'd also call a heifer bull. We've used Pharaoh successfully on heifers for years. They won't all come at 60 pounds like S/M Major M421 (he's a twin) but the CE numbers on him are reliable.

This calf got off to a slow start, as his first-calf dam preferred his twin sister and kicked him off. But he fought for his share, and at a month old we moved him to a cow that lost her baby — and he took off from there. His genetic strength for growth should be better than his performance numbers reflect, as ASA doesn't give a dam's age adjustment on twin calves (nor for those with a tough start like him).

S/M Major M421 is registered as polled, but he did develop small scurs after weaning.

**Tested Non-Diluter**

<b>CE</b>	<b>WW</b>	<b>YW</b>	<b>MCE</b>	<b>MWW</b>	<b>API</b>	<b>TI</b>
<b>13</b>	<b>63</b>	<b>84</b>	<b>10</b>	<b>61</b>	<b>124</b>	<b>70</b>
<b>4</b>	<b>90</b>	<b>90</b>	<b>2</b>	<b>95</b>	<b>2</b>	<b>25</b>

## **Breeding Soundness Guarantee**

**Bulls will be semen tested and given a Breeding Soundness Evaluation by a licensed veterinarian prior to delivery. If a bull fails his evaluation, or is hurt before delivery, your deposit will be returned.**

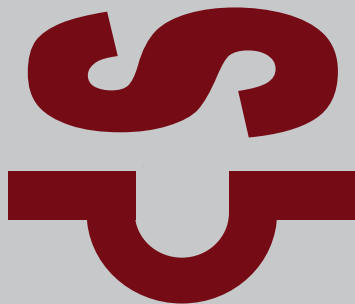
**At semen test time, he will be given his spring pre-breeding shots including Bovishield Gold, Pinkeye and Footrot vaccines.**

**As per the ASA Standard Guarantee, bulls are guaranteed to be breeders (defined as the ability to settle healthy cows by the time the bull is 18 months of age) with the exception of:**

- **injury or disease occurring to the animal after time of sale**
- **gross negligence or willful misconduct on the part of the purchaser**
- **bulls shown competitively after sale**

**Bulls are not guaranteed that they will freeze semen. Seller will not be liable for any damages beyond either replacement or refund for a bull that is proven in his first season to be a non-breeder.**

**Please if your bull isn't breeding, let us know as soon as you confirm it so that we're aware of any problem with him.**



# REFERENCE SIRES

## KUNTZ KINGPIN 2H

3968312 1/05/2020

BW 104 AWW 836

YW 1666

Polled Non-Diluter

Kuntz Kingpin 2H was the most powerful, stout polled Fleckvieh bull of the 2021 sale season. His dam Miss Moses 308A, a broody tank of a cow, has sons in purebred herds across Canada.

Check out his EPDs based on three crops of calves. Kingpin has proven to be a breakthrough sire, with excellent calving ease—AND performance/ power. Sons are uniformly thick, beefy and attractive. Daughters are classy, big-barreled, tidy-uddered and productive females.

US and CDN semen available.



CE	WW	YW	MCE	MWW	API	TI
8	89	134	2	87	124	83
30	3	1	70	1	2	1

## IPU POL ELEVATION 144K

4296280 1/30/2022

BW 90 AWW 790

Polled Non-Diluter

In our search for sires that are both ideal in type and with useful EPDs, we found this sire from Barry LaBatte in Saskatchewan.

With his Calving Ease EPDs, we used him on heifers, and with his deep-bodied beef type and the reputation of his sire for

highly productive daughters, he saw a set of good young cows too. His first calves came easily enough to put his calving ease EPD at the top 1% of the breed. Daughters are tanky, big bodied, dark red and feminine. His first good sons are represented here.

US semen available.



CE	WW	YW	MCE	MWW	API	TI
16	69	95	9	62	103	64
1	70	65	2	90	45	70

## REFERENCE SIRES

### JNR BARBARIAN

4344099      12/18/2021  
 BW 103      AWW 911  
 Horned      Non-Diluter

What a bull is this guy!  
 Through the decades as  
 we developed the polled  
 cattle of S/M Fleckvieh,  
 we've always used the  
 very best horned sires  
 back on them to build  
 them not only polled —  
 but good.

So when Barry LaBatte  
 offered us a semen pack on the 2023 high-selling Canadian sire, JNR  
 Barbarian, we jumped at the opportunity. The bull is massive, muscled,  
 big-barreled, long, strong topped, soft and correct as they come. With his  
 first calf crop now yearlings, he's highly valued for consistently passing  
 those strong traits to his  
 calves.



CE	WW	YW	MCE	MWW	API	TI
5	105	143	5	92	109	85
65	1	1	30	1	25	1

### SANMAR POLLED PHARAO 12P

2328741      1/13/2004  
 BW 88      AWW 807  
 YW 1371      Polled  
 Non-Diluter

Pharao is a Canadian  
 bred bull that is known  
 for his calving ease, and  
 moderate, big-middled  
 females. We re-imported  
 the last semen available  
 for the US to use on  
 heifers — and where his  
 moderate stature would  
 benefit big, powerful cows.



We have one Pharao son on offer this year.

CE	WW	YW	MCE	MWW	API	TI
12	59	79	9	54	131	71
10	99	95	2	99	1	25

**S/M Fleckvieh Cattle**  
**Jeff Sorenson**  
**48186 257th Street**  
**Garretson, SD 57030**